



CHINA TOP BRAND
(2006-2011)



CHINA WELL-KNOWN TRADEMARK



NATIONAL PRODUCTS QUALITY INSPECTION INSTITUTE
(2006-2009)

Special Color

ALUCOBEST

METAL COMPOSITE PANEL



SHANGHAI HUAYUAN NEW COMPOSITE MATERIALS CO., LTD

Add: No.6085 WaiQingSong Road. QingPu Shanghai 201700 China

Tel: 86-21-59729954 86-21-59725292 Fax: 86-21-69710353

Website: www.alucobest.com E-mail: info@huayuanfu.com



METAL SOLUTION

Product	Metal Type	Thickness (mm)		Surface Finish	Application
		Metal	Panel		
Standard					
1	Aluminum	0.20-0.30	2 / 3	Polyester	Interior
2	Aluminum	0.20-0.50	4 / 5 / 6	PVDF	Exterior
3	Copper	0.20-0.55	4 / 5 / 6	Brushed,Bronze,Brass,Weathered	Exterior
4	Stainless Steel	0.20-0.30	4 / 5 / 6	Dull, Brushed,Polished, Mirror	Exterior
5	Zinc	0.50-0.70	4	Natural	Exterior
6	Steel	0.35	3/4	Polyester	Interior

B1 Fire-Resistance

1	Aluminum	0.30-0.50	4 / 5 / 6	PVDF	Exterior
---	----------	-----------	-----------	------	----------

A2 Fire-Resistance

1	Aluminum	0.30-0.50	3 / 4	PVDF	Exterior
---	----------	-----------	-------	------	----------

Special

1	Aluminum	*0.12-0.50	2 / 3	Brushed Polyester	Interior
2	Aluminum	0.20-0.50	2 / 3 / 4	Brushed PVDF	Interior/Exterior
3	Aluminum	*0.12-0.50	2 / 3	Granite Film	Interior
4	Aluminum	0.20-0.30	2 / 3	Wooden Polyester	Interior
5	Aluminum	0.20-0.30	2 / 3	Granite Polyester	Interior
6	Aluminum	0.30-0.50	4 / 5 / 6	Wooden PVDF	Exterior
7	Aluminum	0.30-0.50	4 / 5 / 6	Granite PVDF	Exterior

* WHEN GROOVING AND BENDING, PLEASE KINDLY CHOOSE THE ALUMINUM THICKNESS $\geq 0.20\text{MM}$



SE Composite (304-25 Dull)

HY0001-1



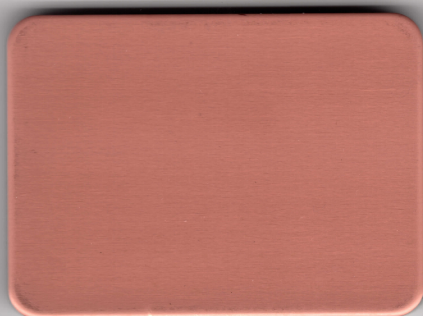
SE Composite (304SS-Long Grn-Polished)

HY0001-1



SE Composite (304SS-24 Polished)

HY0001-2



Copper-Plastic-Alu (Clear)

HY02-001P



Copper-Plastic-Alu (Natural)

HY02



Copper-Plastic-Alu (Weathered)

HY02-002F



Brass-Plastic-Alu (Clear)

HY02-001P



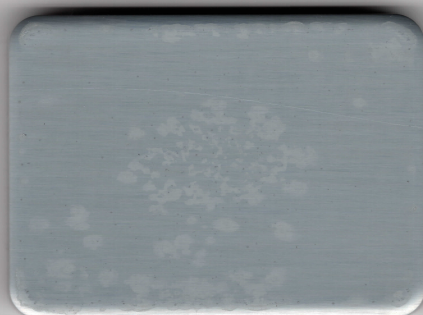
Brass-Plastic-Alu (Bronze)

HY02-002F



Copper-Plastic-Alu (Copper-Grain)

HY02-002F-01



Zinc-Plastic-Alu (Blue Gray)

HY-T24-6



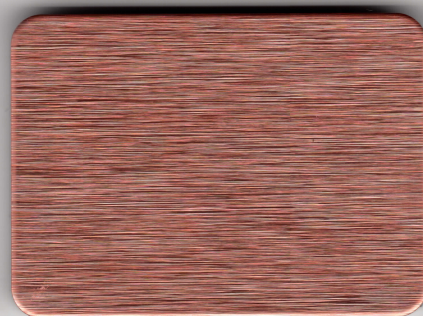
Zinc-Plastic-Alu (Quartz)

HY-T24-1



Zinc-Plastic-Alu (Artificial)

HY-T24-5



ACP (Copper Brushed)

HY0005



ACP (Golden Brushed)

HY0003



Steel Composite (White)

WHIT-0005

WELCOME TO INQUIRY, ORDER BASED ON SEALED SAMPLE



ACP(Coated) Dark Bamboo

HY15125F



ACP(Coated) Bamboo

HY15125F



ACP(Coated) Tiram Walnut

HY161031F



ACP(Coated) Wild Cherry

HY121F



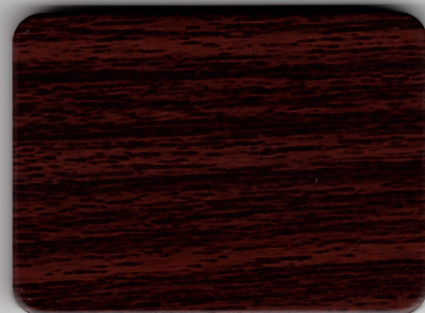
ACP(Coated) Rose Wood

HY125F



ACP(Coated) Teak Allover

HY161031F



ACP(Coated) Mahogany

HY151F



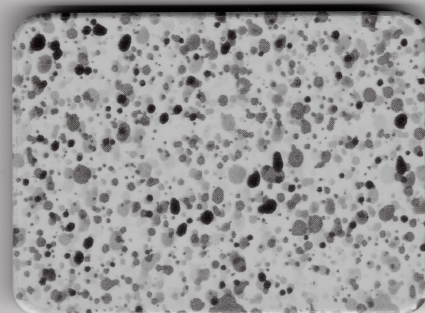
ACP(Coated) Nogal

HY15124F



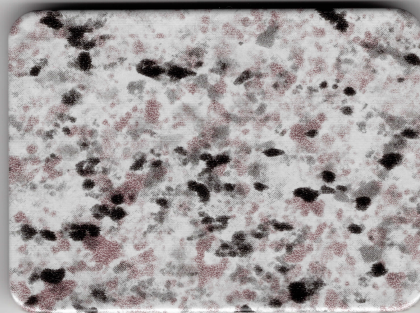
ACP(Coated) Vogue

HY161034F



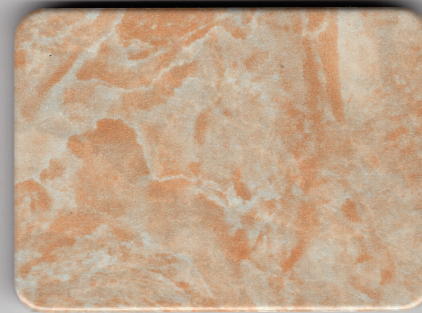
ACP(Coated) Belial White

HY1514F



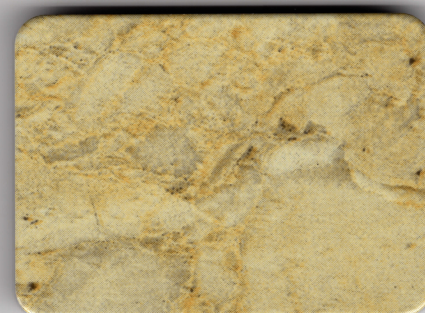
ACP(Coated) Gardenia

HY15125F



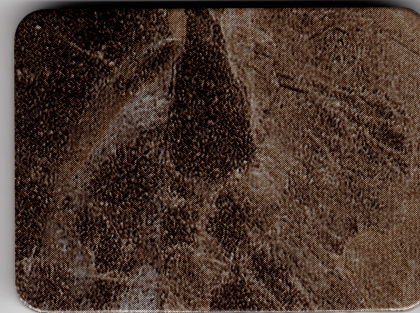
ACP(Coated) Gallo Pesca

HY121F



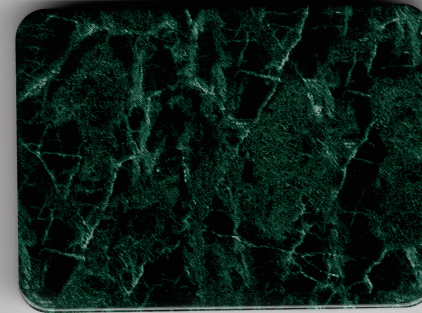
ACP(Film) Perlatto Siero

HY1532



ACP(Film) Emperor Dark

HY1535



ACP(Film) Dark Green

HY1534

WELCOME TO INQUIRY,ORDER BASED ON SEALED SAMPLE



SE Composite (304SS Dull)

HY1001-1



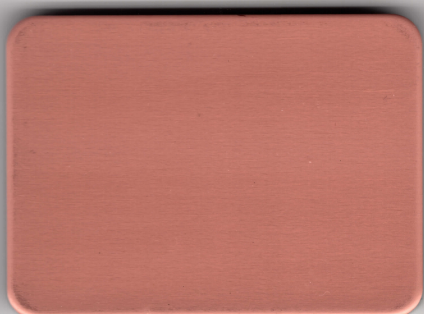
SE Composite (304SS Long Grains-Hairline)

HY1001-1



SE Composite (304SS-2B Polished)

HY1001-2



Copper-Plastic-Alu (Clear)

HY12-01P



Copper-Plastic-Alu (Natural)

HY12



Copper-Plastic-Alu (Weathered)

HY12-02F



Brass-Plastic-Alu (Clear)

HY12-01P



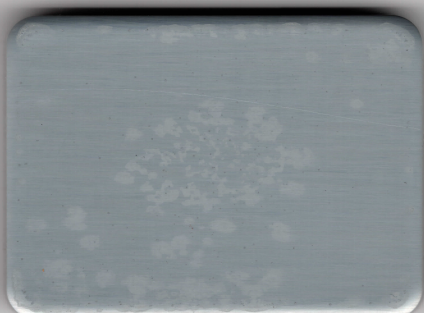
Brass-Plastic-Alu (Brass)

HY12-02F



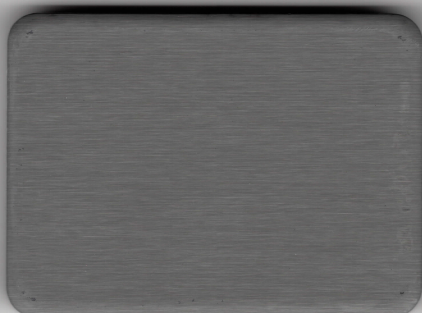
Copper-Plastic-Alu (Copper Coat)

HY12-02F-10



Zinc-Plastic-Alu (Blue Gray)

HY12-04



Zinc-Plastic-Alu (Quartz)

HY12-04-1



Zinc-Plastic-Alu (Antique)

HY12-04-6



ACP (Copper Brushed)

HY1005



ACP (Golden Brushed)

HY1005



Steel Composite (White)

WHIT-006

WELCOME TO INQUIRY(ORDER BASED ON SEALED SAMPLE)



ACP Coated Dark Bamboo HY1025F



ACP Coated Bamboo HY1025F



ACP Coated Teak Walnut HY10031F



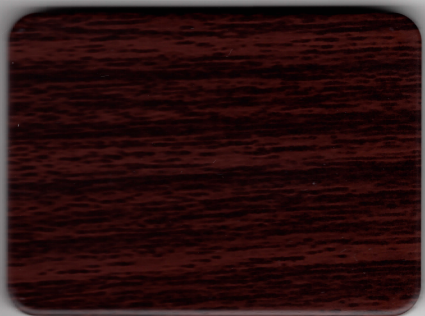
ACP Coated Wild Cherry HY1025F



ACP Coated Rose Wood HY1025F



ACP Coated Teak Allover HY10031F



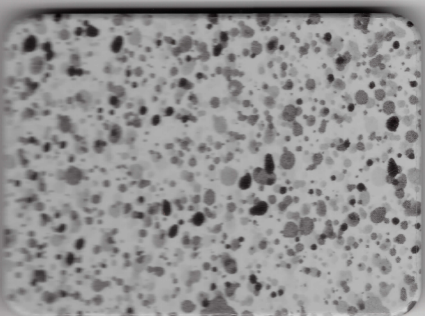
ACP Coated Mahogany HY1025F



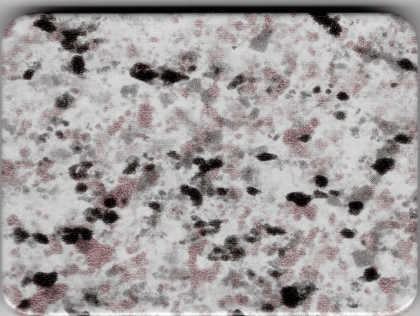
ACP Coated Nopal HY1025F



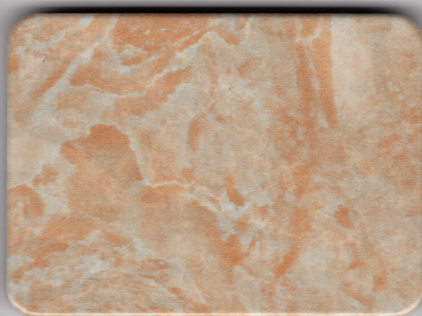
ACP Coated Vignole HY10034F



ACP Coated Marble White HY1025F



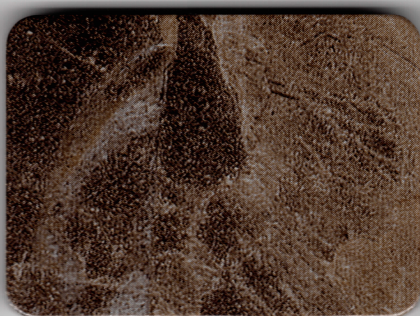
ACP Coated Granite HY1025F



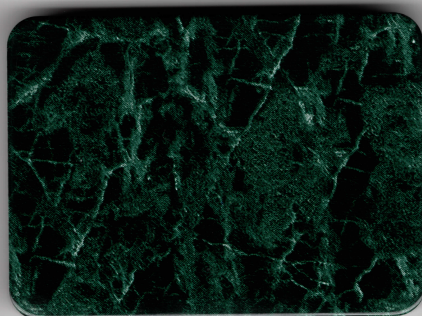
ACP Coated Marble Peach HY1025F



ACP Film Petate Green HY1025F



ACP Film Empress Dark HY1025F



ACP Film Dark Green HY10304

WELCOME TO INQUIRY ORDER BASED ON SEALED SAMPLE



ALUCOBEST CCM

ALUCOBEST CCM is a copper composite material composed of a copper sheet on the topside, a polyethylene core and a copper or aluminum sheet on the reverse side. ALUCOBEST CCM is perfect for wall cladding applications with accent and trim colors in the compatible field.

ALUCOBEST ZCM

ALUCOBEST ZCM is a zinc composite material composed of a chemically-weathered zinc sheet on the topside, a polyethylene core and a zinc or aluminum sheet on the reverse side. ALUCOBEST ZCM is suited to exterior applications such as soffits, awnings, parapets, rain screens, external claddings and roofs, especially where conventional building materials fall short.

ALUCOBEST SCM

ALUCOBEST SCM is a stainless steel composite panel composed of two sheets of stainless steel and a polyethylene core. Both sides of the panel are 304SS or 316SS, which has an outstanding rust resistance. ALUCOBEST SCM is suitable for the external claddings and roof coverings of buildings.

ALUCOBEST WOOD OR GRANITE

Hardly distinguishable from real wood or stone, ALUCOBEST Wood or Granite offers all the benefits of composite materials. It is a composite panel consisting of two aluminum sheets around a polyethylene core. Thanks to its high flatness and corrosion-resistance both products are easy to use and to fabricate. Satin and Matt are available.

ALUCOBEST BRUSHED

The surface Brushed Natural Aluminum shows the typical sheen of aluminum, revealing its full effect with changes in incident light and perspective.

ISO 9001:2008

KYNAR 500

ISO 14001:2004

HYLAR 5000

OHSAS 18001:1999

